



## viewneo® Diwa

### THE DIGITAL CHALKBOARD FOR GASTRONOMY

Almost nowhere else do the offers change as frequently within a day as in gastronomy. Everything from breakfast to lunch, and from happy hour to a romantic candlelight dinner.

In many places, the menu still has to be manually changed at each table. This costs time and money. And this is exactly what you will save with the viewneo Diwa. Thanks to the connection to the cloud, the content at each display can now be changed with just one click. Digital and simple, just like writing on a chalkboard at school.

### Not a normal table stand

- ✓ Automatic, time-controlled change content
- ✓ Control individually or in groups
- ✓ Secure manage with an app or via the Internet
- ✓ Quality design
- ✓ E-Paper display: best readability even in direct sunlight
- ✓ QR codes for payment of digital menus
- ✓ Battery life of up to 45 days with one charge

# Technology meets an elegant design

As valuable as the time you save

High-quality robust **aluminum frame**.

Energy-saving **E-Paper display** for long-lasting use and good readability even with direct exposure to sunlight.

**Whether one or hundreds**, content can be uploaded with an app, from a PC or smartphone, or the viewneo CMS.übertragen.

Connects to the cloud with **WiFi and Bluetooth**.

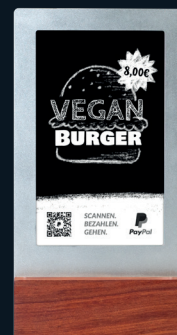
**High-quality base** made of solid wood available in different colors.

**Own branding possible.**



## Fully packed with new options

- ✓ **Automatic upselling** by connecting to the POS system. When the guest orders fish, Diwa recommends the perfect white wine. All by itself.
- ✓ **Contactless payment.** The customer scans a QR code and pays at the table. Connects to various payment systems such as PayPal.
- ✓ **Digital menu** with QR-code.



- ✓ **Covid-19 registration:** This allows the guest to scan a QR code and enter their contact data directly using their smartphone. GDPR compliant and secure.

## With menu cardholder or salt and pepper shakers

Stylish and high quality



## Easy to use

Anyone can use the **Diwa App for IOS and Android** to view the content displayed and easily change and set timings. Then everything is automated and saves a lot of time.

**Pre-designed templates** help to simplify the process. Just adjust the text and price - finished. Additionally, you can use the viewneo Designer to create unique layouts and save them to use later with the app.



You can also **draw using real chalk** and then take a photograph and then show it on Diwa using the app.



## Salt and Pepper Shakers

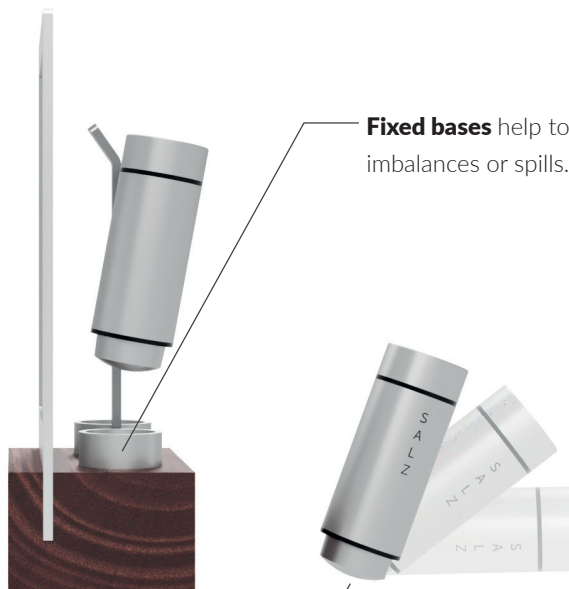
### Built-in order through design

There is also a variant of Diwa with built-in salt and pepper shakers at the back. **Solid aluminum** gives the salt and pepper shakers a solid and high-quality feel.

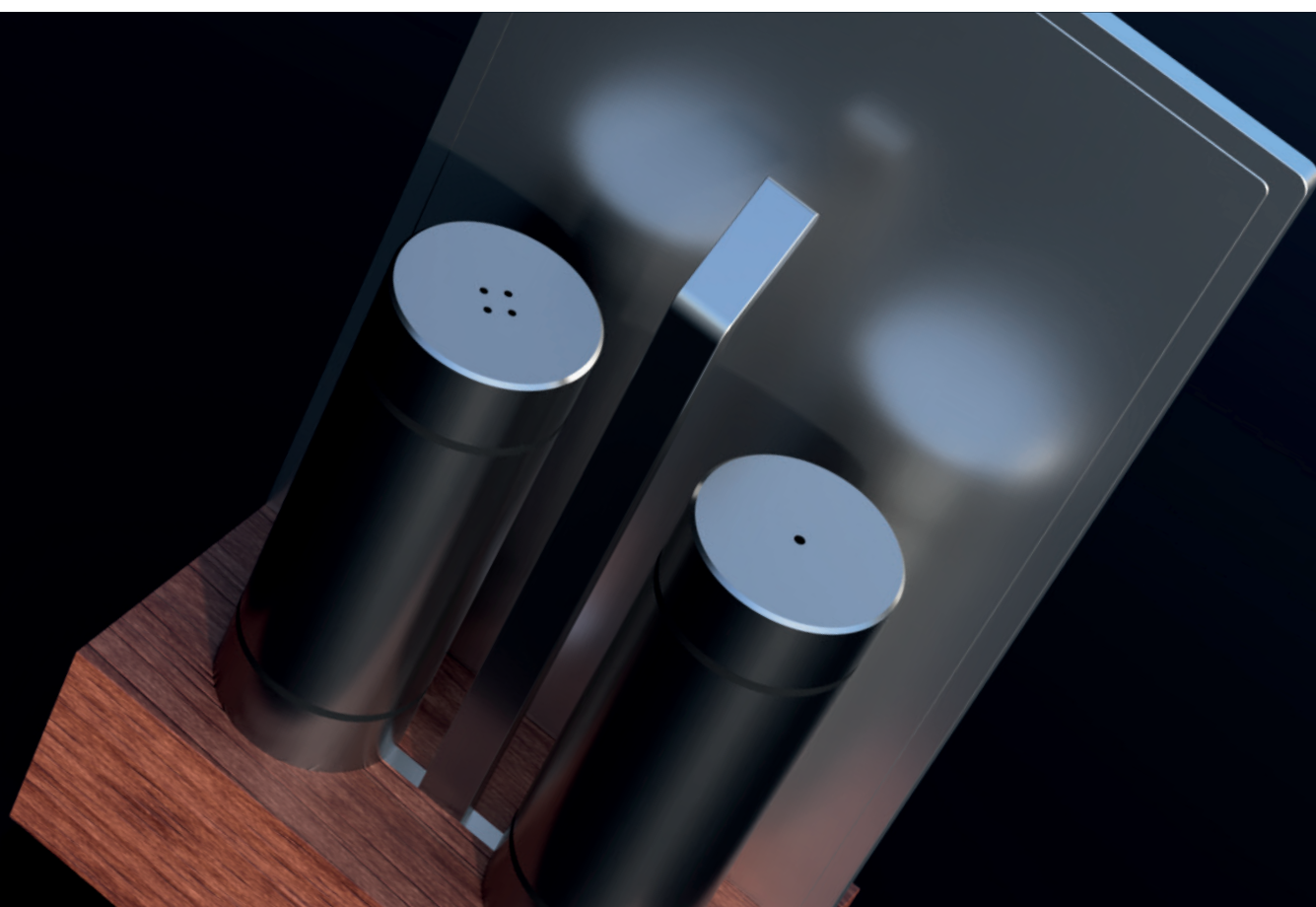
Individual lettering or logo are available when ordering larger quantities.



**Fixed bases** help to ensure no imbalances or spills.

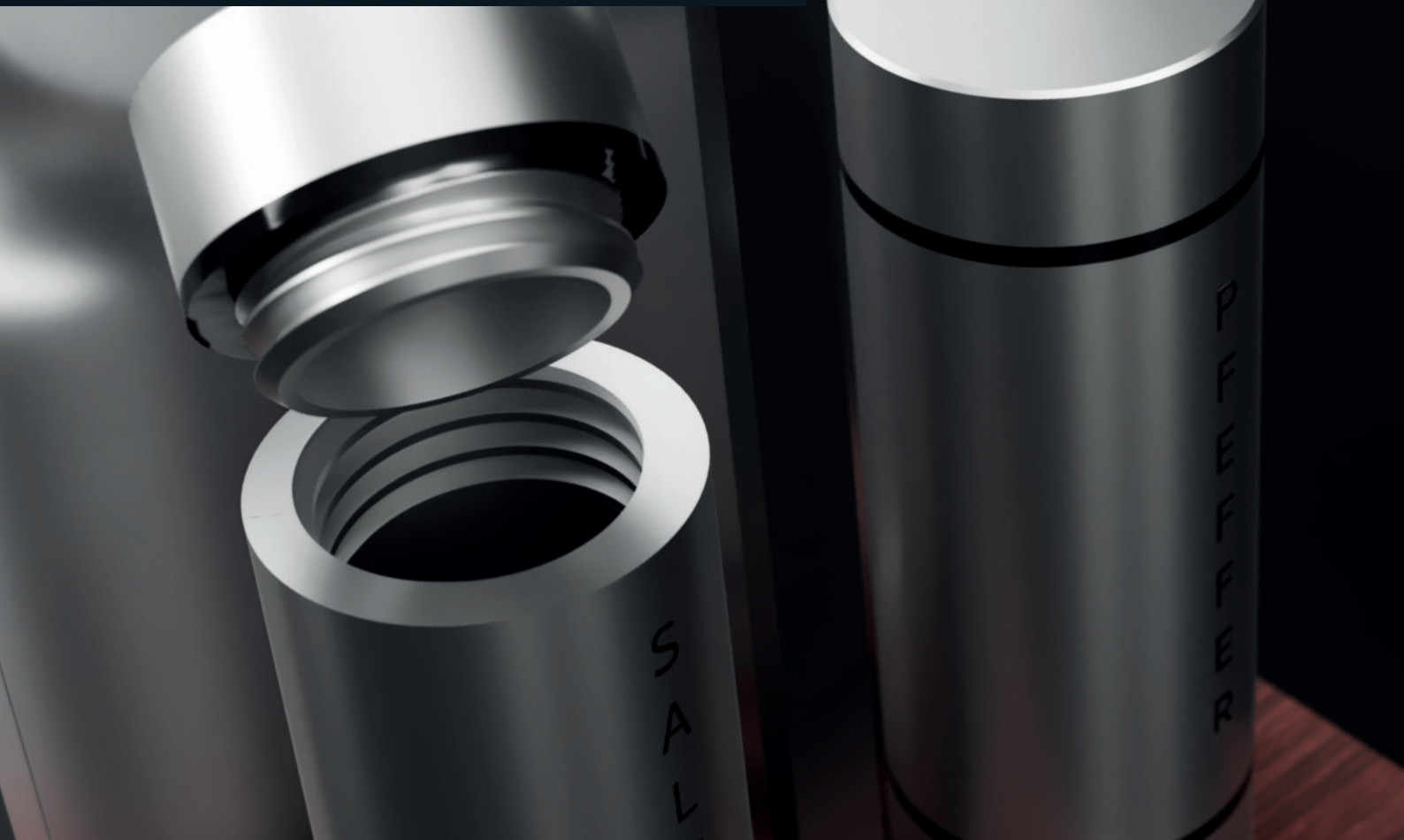


The **patented design** ensures that the shakers are returned after use. This helps keep the table tidy and the shakers available for the next customer.



## Solid aluminum

Robust for everyday use



## Secure QR-codes

In addition to the integrated Covid-19 guest registration, the Diwa also offers the possibility to use third-party apps, such as **Luca** or **Dish**.

**Highlight: the QR-code refreshes automatically every few minutes to help prevent their misuse.** For example, if a guest shares a code on social media.

Anyone who registers as a guest must physically be there to scan the currently valid QR-code.



## Variations

### Weights and dimensions



#### Menu Cards Back

Short wooden base with 3 aluminum arches for 2 menu cards.

Material: anodized aluminum

Dimensions: 75x130x250 mm (LxWxH)

Weight: 800 g



#### Shaker Back

Short wooden base with salt and pepper shakers.

Material: anodized aluminum.

Dimensions: 75x130x250 mm (LxWxH)

Weight: 990 g

## Technical specifications

#### Display

Display Type: E-Paper

Size: 7.5 Inches

Resolution: 800 x 480p

Colors: 4 gray levels

#### Battery

LLithium-ion battery

5800 mAh

Charging time 9V 2A

Empty/Full 2.5 hours

#### WiFi

802.11 b/g/n

802.11 n (2.4 GHz),

up to 150 Mbps

#### Accessories

Charging power supply

9-12V / 2A (optionally available)

#### Bluetooth

Bluetooth 4.2 BR/EDR BLE

